

Protection runs in the uvex skyper® family

uvex skyper®
For Superior
Protection.



uvex skyper X2®

Exceptional Protection
with Sport Styling.

uvex skybrites™

Trendy, Translucent Frame
Colors For Young Adults.

uvex skyline®

Protection for Slender
Facial Profiles.

No matter what your protective eyewear needs are, the **uvex skyper®** Family has you covered. Features include; wrap-around uni-lens design, molded-in nosebridge, sideshields and

browguard, adjustable temple lengths, ratcheting lens inclination and simple lens replacement. See inside for details on each product.

uvex®
Beats Everything in Sight®

uvex skyper[®] family



Molded-in browguard provides additional protection from flying particulates from above.

*Patented, adjustable **duoflex**[®] comfort cushioned temples for all day comfort.

Lifetime Frame Guarantee

3 position ratcheting lens inclination system and adjustable temple length.

Easy and economical lens replacement system available on all uvex skyper models.

Wrap-around uni-lens design with integral sideshields offers exceptional clarity and superior protection.

Impact resistant polycarbonate lens absorbs >99.9% of harmful UVA & UVB radiation.

Molded-in nosebridge

* **duoflex**[®] temples available only on the **uvex skyper**[®].

The **uvex skyper X2**[®], **uvex skyline**[®] and **uvex skybrites**[™] have adjustable spatulite temples.

Frame selections

uvex skyper®

- Wrap-around protective eyewear offering exceptional comfort, protection and fit
- **duoflex®** comfort cushioned temples are standard
- Lens tints: clear, amber, espresso, SCT gray, SCT-vermillion, SCT-low IR, SCT-reflect 50, mirror and infradura® welding shades 2.0, 3.0 and 5.0



FRAME COLORS:



Black



Gunmetal
Gray



uvex skyper X2®

- Sleek and sporty wrap-around protective eyewear combining fashion, fit and function.
- Lens tints: clear, amber, espresso, SCT-gray, SCT-reflect 50 and mirror



FRAME COLORS:



Black



uvex skyline®

- The **uvex skyline®** frame is 10 mm smaller and was designed to fit workers with normal to slender facial profiles.
- Lens tints: clear, amber, espresso, SCT-reflect 50 and mirror



FRAME COLORS:



Black



Blue



uvex skybrites™

- Protective eyewear designed for children and young adults.
- Frame is 10 mm smaller and is available in trendy, translucent colors.
- Lens tints: clear
- CSA approval pending



FRAME COLORS:



Raspberry



Vapor
Blue



Reflex
Yellow



Orange



Innovative technology helps your vision remain clear and comfortable despite challenging work environments. Protective coating technology for polycarbonate eyewear began at **uvex** more than 20 years ago. Today, you can choose between our **ultradura[®]** permanent hardcoat for long-lasting scratch resistance or our advanced, exclusive **uvextreme[®] AF** anti-fog coating.

uvextreme AF's dual action combines the best features of both hydrophilic and hydrophobic coatings. The hydrophilic properties are activated first, simultaneously absorbing moisture from the air and releasing it back into the surrounding environment, maintaining a hydrodynamic equilibrium (HDE). When the hydrophilic coating becomes saturated, the

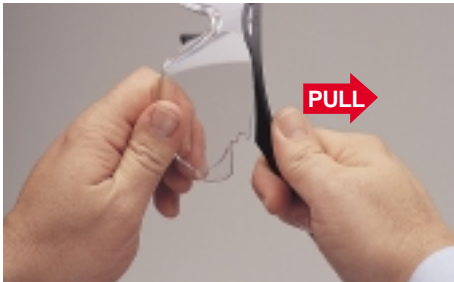
properties of the hydrophobic coating take over to provide optimum anti-fog performance and to help maintain visual acuity.

See for yourself, **uvextreme[®] AF** is the only solution for anti-fog performance in most extreme environments.

Lens Replacement:

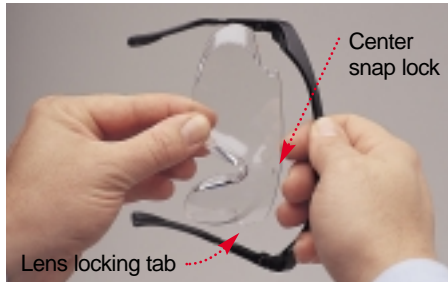
The easy and economical lens replacement feature of the **uvex skyper[®]** family allows workers to exchange lens tints to accommodate changes in lighting or work applications.

Lens Removal:



1. Hold the lens.
2. Hold the brow.
3. Pull to separate the brow from the lens

Lens Replacement:



- To change lens:
1. Insert one corner of lens into the brow bar.
 2. Fit the brow bar over the top of the lens.



3. Push the opposite end into locked position.

Icon Legend/Key Information:

Meets ANSI Z87.1-1989 eyewear requirements



Certified as meeting CSA Z94.3-1992 requirements.



Available with uvextreme[®] AF anti-fog coating.



Available with ultradura[®] chemical & scratch resistant hardcoat.



Available with duoflex[®] comfort cushions.



Available with select welding shades.



Available with a lifetime frame guarantee.



Made in the USA.



© Uvex Safety, Inc. 2001 SF Form #YS055
RPI 5/01

Authorized uvex Distributor

Printed in the U.S.A.

UVEX SAFETY
A Division of Bacou USA Safety, Inc.
10 Thurber Boulevard
Smithfield, RI 02917
(800) 343-3411
fax: (401) 232-1830
<http://www.uvex.com>